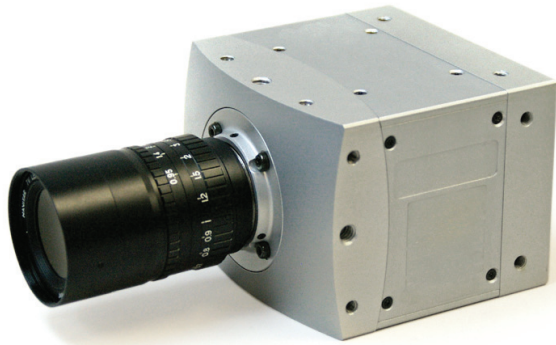


HiSpec 5

3 Megapixel High Resolution
 High Speed Camera

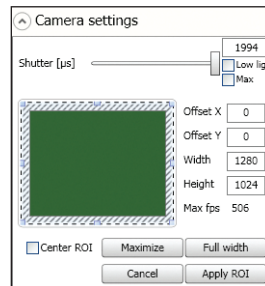


Fast Facts

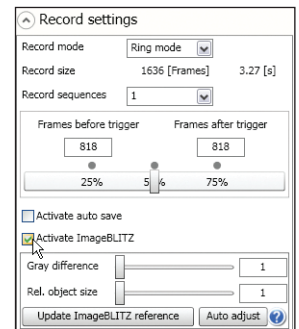
- **Outstanding Image Quality:** Up to 523 frames per second at 1696 x 1710 resolution
- **Extremely Fast:** 1150 fps at 1280 x 1024 resolution
- **Well Connected:** GiGE compatible for easy remote camera control
- **Fits Anywhere:** Only 69mm H x 93mm W x 92mm D, C-Mount and .9 kg
- **GiGE Vision:** Industry standard control interface



Easy to use
 Camera Control
 Software



ImageBLITZ® Auto
 Trigger feature
 based on selectable
 region of interest



Key Features

- **High Resolution and High Speed** – The HiSpec 5 provides superb quality images with its 1696 x 1710 pixel resolution. And it is a perfect fit for a wide variety of high-speed motion applications with the capability to capture megapixel images at more than 1400 fps.
- **Optional ImageBLITZ® Auto Trigger & Multi-Sequence Mode** – Now it's easy to capture those elusive random events. Simply define a "region of interest" in the field of view and let the ImageBLITZ® trigger take over. Any change in the pre-set image area will stop the recording and save the event sequence. No special hardware or intrusive wiring is required. And the optional Multi-Sequence Mode allows the recording of multiple events by partitioning the memory into 2, 4, 8 or 16 individual recordings.
- **Optional Hi-G Configuration** - The HiSpec 5 has been certified to 100 "G" accelerations making it the ideal combination of ruggedness with small size. Fits into tight spaces for on-board automotive impact testing, military ordinance testing and other harsh environments. The built-in battery operates in three modes:
 - Ensures fail-safe operation in the event of a power loss
 - Allows "untethered" operation for up to 1 hour
 - Has image retention mode of up to 24 hours
- **Use it Everywhere** – The HiSpec 5's Gigabit Ethernet interface allows the user to operate multiple cameras from any standard Notebook / PC up to a distance of 100 meters. The HiSpec 5 is designed for easy operation in virtually any industrial or laboratory environment.

See what you've been missing

Fastec HiSpec 5

Camera Specifications

Standard Features

System Design

Scaleable and network-compatible with standard and/or notebook PCs
Synchronous processing of multiple cameras

Sensor

CMOS sensor, 1696 x 1710 pixels, 8-bit monochrome or RGB color with BAYER filter.
Active pixel area 19.27mm diagonal

Pixel Size

8 x 8 μ m

Light Sensitivity

1600 ISO monochrome, 1000 ISO color

Spectral Bandwidth

400 - 900 nm

Record Rate

Up to 523 fps at full resolution, up to 298,851 fps at reduced resolution

Image Memory

4GB. Optional upgrade to 8GB or 16GB

Recording Time

3.2 seconds at full resolution

Shutter

Longer record times with variable resolution and frame rates

Lens Mount

Global electronic shutter from 2 μ sec to 1 second in 2 μ sec steps

Frame Format

C-Mount or F-Mount

Camera / PC Interface

BMP, TIF, DNG, JPG or AVI file format

Phase Lock

1000/100 Ethernet interface (Gigabit Ethernet)

Trigger

Multiple cameras can be synchronized to a master camera or to an external source such as optional IRIG-B

Multi-Sequence Record Mode

Contact closure, external TTL signal or software trigger with optional ImageBLITZ[®] Auto Trigger

Camera Size

2, 4, 8 or 16 individual recording partitions (optional)

Camera Weight

69mm H x 93mm W x 92mm D with C-Mount

Operating Environment

69mm H x 93mm W x 128mm D with F-Mount

Power Supply

.9 kg. without lens

Power Consumption

+ 5° to + 45°C

10 - 30V DC external power supply

15W maximum

Software Specifications

Camera Control Software

HiSpec 2 Director software for Windows 7/Vista/XP

Image Amplification

Digital gain from 1 - 4 in 8 steps

Optional SDK

GiGE Vision compatible



Options Available

Memory

8GB or 16GB

Auto Trigger

ImageBLITZ[®] Software - Auto Trigger

Multi-Sequence Mode

2, 4, 8 or 16 individual recording partitions

IRIG-B

Range timing standard

Hi-G Certified

Certified for shock to 100g for 25ms, vibration to 10g

F-Mount Adapter

Convert from C-Mount lenses to F-Mount lenses

Connector Position

Select from rear or side connector positions

Removable Storage

16GB SD Card (Not available together with 16GB memory configuration)

Canadian Distributor:
High Speed Imaging Inc.
520 Allbright Road
Uxbridge Ontario Canada L9P 1R4
Phone: (905) 649-5445 Fax: (905) 649-4038
E-mail: info@hsi.ca Web: www.hsi.ca

Sample Frame Rates and Resolutions

Maximum Frame Rate	Resolution	4GB Standard		8GB Option		16GB Option	
		Recording Time @ Maximum Frame Rate	Total Frames	Recording Time @ Maximum Frame Rate	Total Frames	Recording Time @ Maximum Frame Rate	Total Frames
523 fps	1696 x 1710	2.8 sec.	1,480	5.7 sec.	2,960	11.4 sec.	5,920
1,150 fps	1280 x 1024	2.8 sec.	3,277	5.7 sec.	6,555	11.4 sec.	13,110
1,633 fps	1280 x 720	2.8 sec.	4,654	5.7 sec.	9,324	11.4 sec.	18,648
1,405 fps	1024 x 1024	2.9 sec.	4,075	5.8 sec.	8,191	11.6 sec.	16,382
4,453 fps	640 x 480	3.1 sec.	13,982	6.3 sec.	27,965	12.6 sec.	55,930
5,001 fps	512 x 512	3.3 sec.	16,403	6.6 sec.	33,007	13.2 sec.	66,014
14,781 fps	320 x 240	3.8 sec.	55,872	7.6 sec.	111,892	15.2 sec.	223,784
298,851 fps	128 x 2	56.1 sec.	16,777,495	114.0 sec.	34,069,014	228.0 sec.	68,138,028

FASTEC IMAGING 17150 Via Del Campo, Ste. 301 • San Diego • CA 92127 • CA USA

1.858.592.2342 • www.fastecimaging.com

Specifications subject to change without notice. ImageBLITZ[®] is a trademark of Mikrotron GmbH.