

HiSpec 2 Innovative Low-Light High-Speed Camera

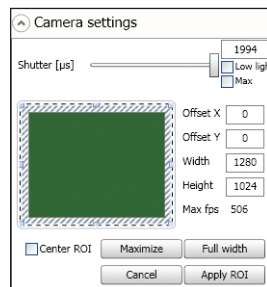


Fast Facts

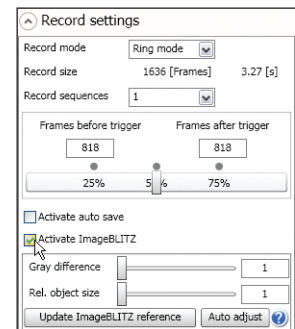
- **Excellent Light Sensitivity:** 3,200 ISO monochrome, 1,600 ISO color
- **Outstanding Image Quality:** Up to 506 frames per second at 1280 x 1024 resolution
- **Extremely Fast:** Adjustable frame rate up to 112,000 frames per second
- **Well Connected:** GiGE compatible for easy remote camera control
- **Fits Anywhere:** Only 69mm H x 93mm W x 92mm D, C-Mount and .9 kg.
- **GiGE Vision:** Industry standard control interface



Easy to use
Camera Control
Software



ImageBLITZ® Auto
Trigger feature
based on selectable
region of interest



Key Features

- **Forget About Bright Lights** – Until now, lighting has sometimes been a challenge with high-speed imaging. No more! The photo-sensitivity of the HiSpec 2 enables high speed recordings at 1.3 megapixels under normal lighting conditions.
- **Optional ImageBLITZ® Auto Trigger** – Now it's easy to capture those elusive random events. Simply define a "region of interest" in the field of view and let the ImageBLITZ® trigger take over. Any change in the pre-set image area will stop the recording and save the event sequence. No special hardware or intrusive wiring is required.
- **Optional Hi-G Configuration** - The HiSpec 2 has been certified to 100 "G" accelerations making it the ideal combination of ruggedness with small size. Fits into tight spaces for on-board automotive impact testing, military ordinance testing and other harsh environments. The built-in battery operates in three modes:
 - Ensures fail-safe operation in the event of a power loss
 - Allows "untethered" operation for up to 1 hour
 - Has image retention mode of up to 24 hours
- **Use it Everywhere** – The HiSpec 2's Gigabit Ethernet interface allows the user to operate multiple cameras from any standard Notebook / PC up to a distance of 100 meters. The HiSpec 2 is designed for easy operation in virtually any industrial or laboratory environment.

See what you've been missing

Fastec HiSpec 2

Camera Specifications

Standard Features

System Design

Scaleable and network-compatible with standard and/or notebook PCs
Synchronous processing of multiple cameras

Sensor

CMOS sensor, 1280 x 1024 pixels, 10-bit monochrome or RGB color with BAYER filter
Active pixel area 22.9mm diagonal

Pixel Size

14 x 14 μ m

Light Sensitivity

3,200 ISO monochrome, 1,600 ISO color

Spectral Bandwidth

400 - 900 nm

Record Rate

Up to 506 fps at full resolution, up to 298,851 fps at reduced resolution

Image Memory

4GB standard. Optional upgrade to 8GB

Recording Time

6.4 seconds at full resolution

Longer record times with variable resolution and frame rates

Shutter

Global electronic shutter from 2 μ sec to 1 second in 2 μ sec steps

Lens Mount

C-Mount or F-Mount

Frame Format

BMP, TIF, DNG, JPG or AVI file format

Camera / PC Interface

1000/100 Ethernet interface (Gigabit Ethernet)

Phase Lock

Multiple cameras can be synchronized to a master camera or to an external source such as optional IRIG-B

Trigger

Contact closure, external TTL signal or software trigger (ImageBLITZ® Auto Trigger)

Multi-Sequence Record Mode

2, 4, 8 or 16 individual recording partitions

Camera Size

69mm H x 93mm W x 93mm D with C-Mount

63mm H x 93mm W x 128mm D with F-Mount

Camera Weight

.9 kg. without lens

Operating Environment

+ 5° to + 45°C

Power Supply

10 - 30V DC external power supply

Power Consumption

15W maximum

Software Specifications


Camera Control Software

HiSpec 2 Director software for Windows 2000/XP/Vista

Image Amplification

Digital gain from 1 to 4 in 8 steps

Optional SDK

GiGE Vision compatible 

Options Available

Memory

8GB

Auto Trigger

ImageBLITZ® Software – Auto Trigger

Multi-Sequence Mode

2, 4, 8 or 16 individual recording partitions

IRIG-B

Range timing standard

Hi-G Certified

Certified for shock to 100g for 20ms, vibration to 10g

F-Mount Adapter

Convert from C-Mount lenses to F-Mount lenses

Sample Frame Rates and Resolutions

Maximum Frame Rate	Resolution	4GB Standard		8GB Option	
		Recording Time @ Maximum Frame Rate	Total Frames	Recording Time @ Maximum Frame Rate	Total Frames
506 fps	1280 x 1024	6.5 sec	3,274	12.9 sec	6,550
718 fps	1280 x 720	6.5 sec	4,656	13.0 sec	9,317
1,008 fps	1280 x 512	6.5 sec	6,548	13.0 sec	13,103
1,319 fps	768 x 600	7.1 sec	9,313	14.1 sec	18,635
2,312 fps	480 x 480	8.1 sec	18,627	16.1 sec	37,271
5,672 fps	320 x 240	9.9 sec	55,879	19.7 sec	111,813
13,540 fps	144 x 144	15.3 sec	206,967	30.6 sec	414,125
112,183 fps	128 x 2	149.4 sec	16,877,450	298.8 sec	33,542,717



17150 Via Del Campo, Ste. 301 • San Diego • CA 92127 • CA USA

1.858.592.2342 • www.fastecimaging.com

Specifications subject to change without notice. ImageBLITZ® is a trademark of Mikrotrotron

R1-HiSpec2-04/12

Canadian Distributor:
High Speed Imaging Inc.
520 Allbright Road Uxbridge
Ontario Canada L9P 1R4
Phone: (905) 649-5445
E-mail: info@hsi.ca
Web: www.hsi.ca