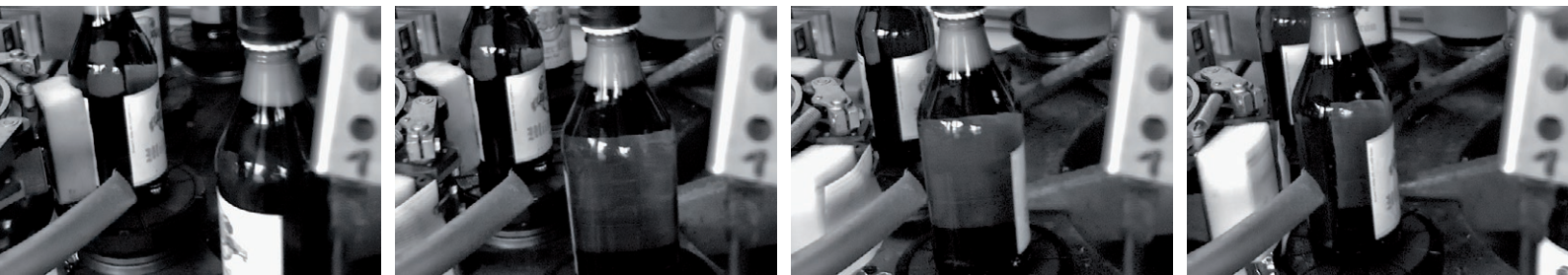


PROMON SCOPE G2 – a Portable High Speed Streaming System



The high-speed camera system PROMON SCOPE G2 sets new standards for portable high-speed recording devices. Thanks to an intuitive touchscreen interface, a weight of only 2.5 kg (5.5lbs), as well as a battery-supported autonomy time of more than two hours, the compact and portable system is ready for immediate use on the factory floor – due to its solid construction also in challenging environments. PROMON SCOPE G2 supports users in troubleshooting, servicing assembly lines, preventive maintenance tasks, and in fine-tuning and optimization of production processes.

With a recording rate of up to 3000 images per second, the high-speed camera system PROMON SCOPE G2 allows detailed insight in slow motion into the fastest production processes. PROMON SCOPE G2 is the ideal tool to record sporadic errors for in-depth analysis. The high resolution images reveal even the smallest details and allow fundamental understanding of the recorded process. Understanding a process in detail under real world conditions is a key factor for its optimization and for maximizing output.

In addition to the image data, external analog signals such as voltages, pressure, switch states, or PLC-signals can be recorded picture-synchronous, and displayed as video overlays. Additional features are a trigger input for start / stop of the recording and a touch screen. Setting up this camera and playing back sequences is just a fingertip away.

Special features

- **Ready to use in an instant** – No time consuming installations, setups or configurations necessary. Autonomous operation thanks to built-in battery.
- **External signals** – Recording of external analog and digital signals; retains system conditions during the recording
- **Efficient** – Rapid detection of errors and optimization potential
- **Intuitive operation** – Progressive, intuitive operating concept; minimal training periods
- **Robust construction** – Shock absorbing aluminum-magnesium-casing for use in tough environmental conditions

PROMON SCOPE G2 – Key Specifications

Frame rate vs resolution vs recording time

fps	Resolution Setting 1 (square)	Resolution Setting 2 (rectangular)
30	2048 x 1088	2048 x 1088
50	2048 x 1088	2048 x 1088
80	2048 x 1088	2048 x 1088
90	1280 x 1024	1280 x 1024
100	1280 x 800	1280 x 900
200	1024 x 800	1024 x 800
250	1024 x 720	1024 x 720
300	800 x 608	1024 x 608
375	640 x 480	1024 x 480
500	544 x 352	1024 x 352
560	480 x 640	640 x 480 *
700	544 x 240	1024 x 240
1000	480 x 352	480 x 352
1400	320 x 240	480 x 240
2000	320 x 160	480 x 160
2500	320 x 128	480 x 128
3000	320 x 96	480 x 96

* Camera must be rotated by 90 degrees
 – 40 minutes recording time with the above mentioned settings (at maximum frame rate)
 – Optional: 80 minutes recording time

Camera/Sensor specifications

Camera Model		PROMON 501 color	PROMON 501 monochrome	PROMON 501 near infrared
Sensitivity		ISO 2400	ISO 3600	5.56 V/lux-sec
Casing	Compact, robust aluminum case			
Sensor	2/3" CMOS (12.76 mm diagonal) / pixel size 5.5 µm			
Optical Mount	C-Mount / CS-Mount			
Port	Robust all-in-one plug			
Size/Weight	54 x 54 x 65 mm / 332 gr (0.8 lb)			
Operating Temperature	0 ... +45 °C / +32 ... +113 °F			
Storage Temperature	-40 ... +70 °C / -40 ... +158 °F			
Mounting Options	M4 threads on all sides UNC 1/4" bottom and on the side for tripod mount			
CE	In accordance with common standards			

Control unit specifications

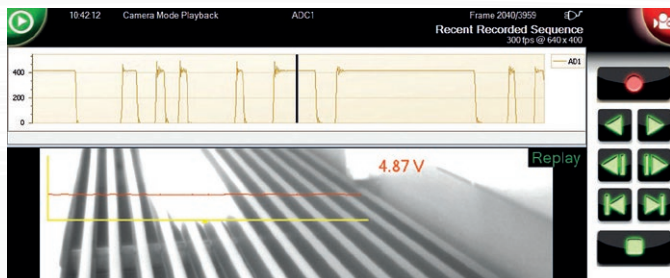
Control Unit	Compact, fanless housing
Display	10" TFT display with touchscreen
Battery	11.1 V / 57.72 Watts Rechargeable, exchangeable lithium-ion battery for more than 2 hours of autonomy / battery extension available
Trigger Functions	Ringbuffer recording, Pre-/post trigger recording
Trigger	Closing / opening contact or manual
Motion Detection	Movement as trigger release or as an event marker
Analogue / Digital Input	2 A/D-channels for picture synchronous recording of analogue signals / 0-5 V / 0-24 V / A/D-resolution 10 Bit / sampling frequency corresponds to respective frame rate
Memory	Standard memory: 250 GB SSD Disk (approx. 40 minutes recording time) Optional: 500 GB (approx. 80 minutes recording time)
Dimensions / Weight	266 x 220 x 50.5 mm / 2.5 kg (5.5 lbs)
Operating Temp.	0 ... +45 °C / +32 ... +113 °F
Storage Temp.	-40 ... +70 °C / -40 ... +158 °F
CE	CE, FCC class B

Interfaces

I/O-Plug	Connection of the AD-signals und Strobe-signals for the control of an external lighting system
Trigger In	BNC connector +24 V max
Data Export	Via USB 3.0 hard disk or SD-Card
Editing Software	Range of functions: – Playback of a sequence – Cutting and editing – Storing as AVI-files Optional: Motion analysis software
Requirements PC System	Win 7/8 – 32 Bit/64 Bit Graphic card with Full-HD resolution (1920 x 1080)

Scope of delivery

	Battery-powered control unit PROMON 501 camera (camera type defined with order) PC-software with manual and documentation on CD Power supply 110–240 VAC / 19 V / 60 W Cable for camera connection 3.5 m (11 ft) / other lengths on request Desk stand Protection bag
Optional	– Docking station – Memory expansion (80 min.) – Replacement battery – Additional battery for 3 hours of operation – Transport case – Optics, lighting and supporting arm – Motion analysis software – Streaming packet for operating the camera on a PC system – I/O-adapter cable with BNC plugs



Picture synchronous recording of external signals (such as voltage)



Dedicated control buttons for quick access to menu, exposure time, and user-specific camera settings.

Your local AOS partner:

